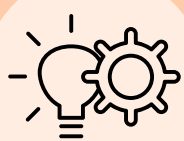


10 WAYS DURHAMWORKS can help you & your students!

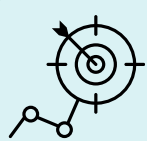
Contact us to find out more: DWPFS@durham.gov.uk to find out more!



01. Workplaces Project Y10

Individualised mentoring support and groupwork for select Year 11 students to support transition into their post 16 options. Help and support from dedicated advisers to set goals and achieve them. Helping to prepare students for the world of work

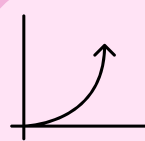
Increasing aspirations and learning about the world of work in Year 10 and Year 12. Students meet with employers to look at pathways, expectations and LMI.



03. Intended Destinations

Giving you a snapshot of your previous Year 11s sustainment in Education, Employment or Training. Receiving timescale: **Indicative** - Before Christmas. **Sustainment of destination** - End of February

Collection of data from Year 11 students to report back to DfE and ensure that students have an offer of learning.



05. Regular Offer of Support

RONI Data will be available for your Year 10 and Year 11 students to identify young people most at risk of becoming NEET. Watch out for this information coming to you!

04. Activity Survey



Raising the Participation Age and ensuring young people are in education, employment and training until their 18th Birthday. Including the offer of support to find EET opportunities for a minimum of 2 years after leaving school.



07. Schools Portal & Sharing Info

We always have programmes running over the summer for school leavers to support young people. This programme will be personalised and support transition into their career pathway.

06. Year 10 RONI



Did you know? We are on the schools portal and post any updates about our services. Please see 'Progression and Learning' tab to find out more! You can contact parents/carers about us to support over the summer transition from Year 11 - 12



09. Statutory Duty

We provide activities to support your school meet the Gatsby Benchmark. Contact us to ask!

08. Transition Programme



Supporting all students in Year 11 with an EHCP or who are Looked After to have a personal guidance session.

10. Gatsby Benchmark

